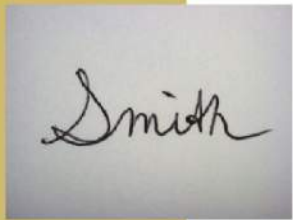


# Manual Motion

ImageXpert Stand-Alone Audit Station

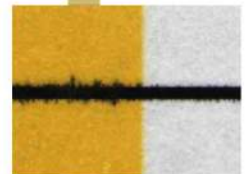
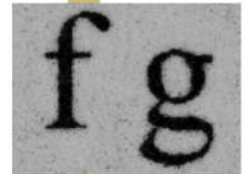



The ImageXpert Manual Motion Workstation enables rapid characterization of print quality and almost unlimited customizable measurement of key feature attributes.

## FEATURES AND BENEFITS

ImageXpert's Manual Motion System Includes:

- Overhead camera for high resolution image capture.
- Manual motion stage, allowing easy and smooth sample movement.
- Workstation
- ImageXpert software, including detailed characterization of text, dot, and line quality, inter-color bleed, resolution, solid areas/halftones, color registration, OCR, and many other easily customizable measurements
- A variety of available light sources.





ImageXpert tools can be applied to measure a variety of image attributes contributing to the quality of printed output. Quantitative image analysis tools can also be used in security printing and in authentication, detection and analysis of forgeries and counterfeits, as well as altered documents.

Economic solution offering image capture, target control, and a full image analysis suite, in one test fixture.

**Benefits**

ImageXpert is a calibrated, high precision optical measurement system for a variety of applications, and includes a full suite of image analysis and enhancement algorithms.

As a stand-alone system, or integrated on-line production, this camera based system can be customized to fit your application, including parts inspection, print quality, or security printing and authentication.

**Print Quality**

Print quality is measured objectively, quantifiably, against tolerances (pass/fail), and all results are recorded.

Analysis tools include dynamic locating, correlation, line quality, color characterization, grayscale, color registration, dimensional accuracy, text quality, resolution, coverage, sharpness, halftone quality, dot quality, skew, uniformity, streaks and bands, FFT, dot placement, mottle and graininess, OCR/Barcode, and more.

**Forensic**

Software includes tools to measure banknote wear, plate registration, pattern matching, text analysis, gray profiles, edge quality, image registration, passport authentication, signature analysis, and a variety of other non-destructive testing.

**Parts Analysis**

Software includes tools to easily create customized measurements to quantify key parts attributes, both for development, and quality control.

**System Components**

Workstation and Software	Workstation pre-configured and loaded with ImageXpert software for custom image analysis. Microsoft office is included.
Camera	Firewire interface, color camera available, C-mount for multiple lens options, magnification and resolution dependent on application requirements
Manual Motion Table	Motion table dimensions and travel may be dependent on application requirements. 12"X12" travel is standard.
Light Source	Ring light is standard, but custom lighting options are available.
Accessories	Optical Calibration Target, Documentation
Options	Options include pre-built custom applications, color camera, alternative lighting sources, multiple cameras, larger motion table, motorized table, X-Rite, laser for 3d mapping, etc.

**imageXpert**

[www.jetxpert.com](http://www.jetxpert.com)

Email: [info@imagexpert.com](mailto:info@imagexpert.com)

Tel: 603-598-2500

Fax: 603-598-2687