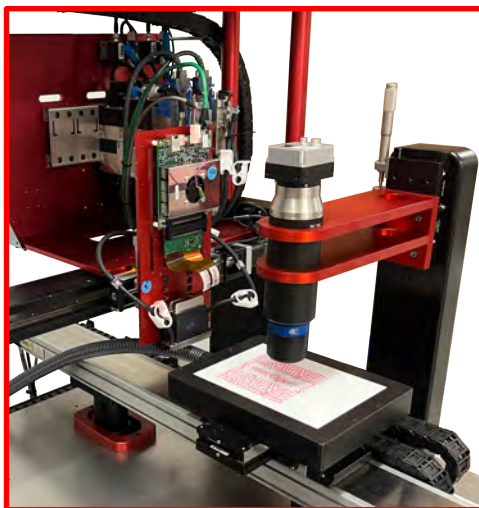


All-in-one dropwatching, printing, and print quality analysis



Features and Benefits

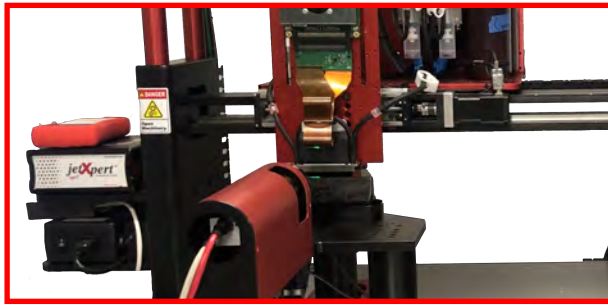
- The JetXpert Print Station is a complete platform for inkjet R&D and pilot production
- Designed for experimenting, with drop-in-flight and print quality analysis systems
- Production-grade movement and print repeatability
- Customizable with any printhead, drive electronics, number of colors, and other options
- Modular design that can be upgraded over time as your project evolves
- The Print Station is also available as an upgrade to existing JetXpert Systems



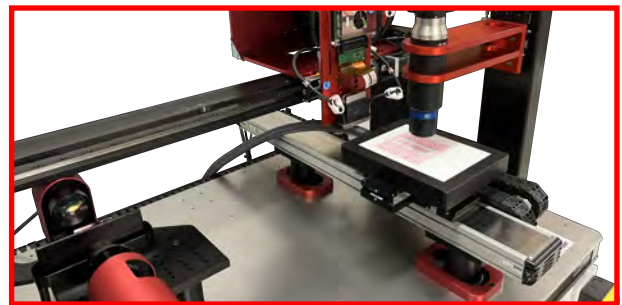
Designed For:

- Printhead Evaluation
- Fluid Development
- Waveform Design
- Process Optimization
- Pilot Production

Drop Analysis Station



Print Analysis Station



System Components

| | |
|------------------------|--|
| JetXpert | Drop visualization and analysis of drop volume, velocity, and trajectory High quality optics for sharp images of drops, satellites, and misting Upgradeable with additional cameras and capabilities to automate common tests |
| Printing Stage | High speed, high resolution linear stage Can be configured with X, Y, Z, and R axes Vacuum, heated, or customer substrate holder |
| Printhead Mount | Custom mounts for every printhead on the market Mounting for one or more printheads in any configuration |
| Drive Electronics | Compatible with drive electronics from all manufacturers Can be configured and supported by ImageXpert or with your equipment |
| Ink Delivery System | Work with gravity-fed, recirculating, heating, degassing, or multiple fluids Can be configured and supported by ImageXpert or with your own equipment |
| Print Quality Analysis | Allows visualization and quantitative analysis of print quality using fully integrated software Highly customizable hardware and analysis for your application Measurement capabilities include dot, line, edge, text, bleed, etc. |
| Print Process | Camera-based substrate alignment UV, LED, NIR, or other curing station Plasma, corona, or another pretreatment |

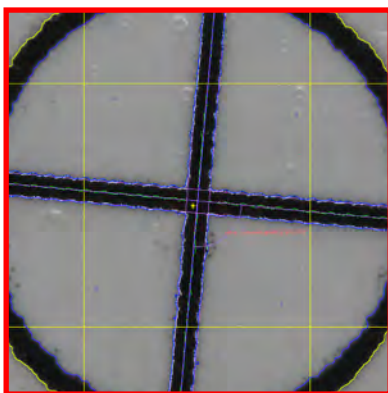


Side Shooting Orientation

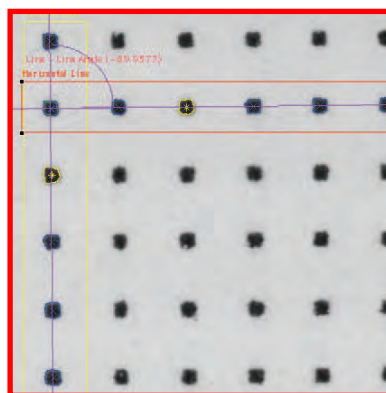
| Print Station Specs | |
|-----------------------------------|---|
| Print Repeatability | 1.5 μ m |
| Max Substrate Size | 440 x 300 mm * |
| Max Substrate Thickness | 75 mm * |
| Substrate Hold | Vacuum Clamping |
| Substrate Temperature Control Max | 150 °C |
| Print Speed | Up to 2 m/s |
| Printheads | Universal Compatibility |
| Drive Electronics | Universal Compatibility |
| Number of Colors | 1 - 4 * |
| Machine Vision | Dropwatching, Substrate Alignment, Print Quality Analysis |
| Ink Types | Universal Compatibility |
| Ink Supply | Gravity, Recirculation, Heated, Degas |
| Footprint | 1.2 x 1.2 x 1.6 m |
| Weight | 450 kg |
| Ink Curing / Drying Systems | Universal Compatibility |
| Enclosure | UV Blocking, Mist Extraction, Safety Doors |

*Customizable

Substrate Alignment



Print Quality Analysis



Drop Analysis

