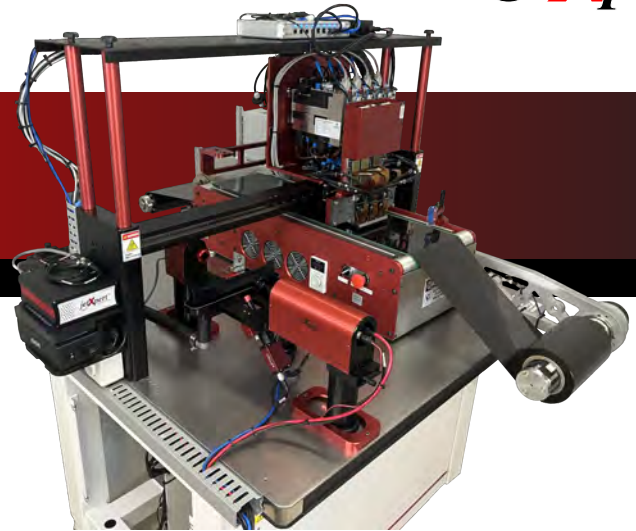


All-in-one dropwatching, printing, and print quality analysis



Features and Benefits

- The JetXpert Print Station is a complete platform for inkjet R&D and pilot production
- Designed for experimenting, with drop-in-flight and print quality analysis systems
- Production-grade movement and print repeatability
- Customizable with any printhead, drive electronics, number of colors, and other options
- Modular design that can be upgraded over time as your project evolves
- The Print Station is also available as an upgrade to existing JetXpert Systems



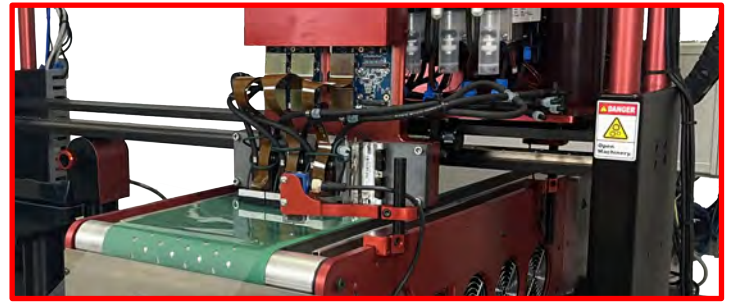
Designed For:

- Printhead Evaluation
- Fluid Development
- Waveform Design
- Process Optimization
- Pilot Production

Drop Analysis Station



Print Analysis Station

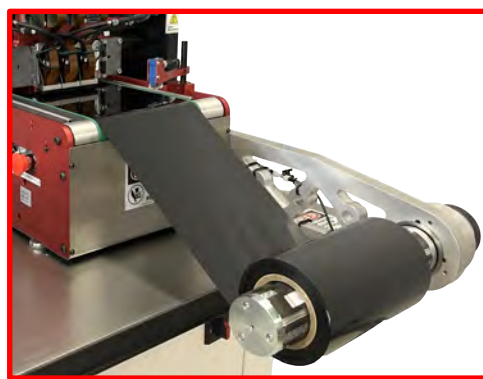


System Components

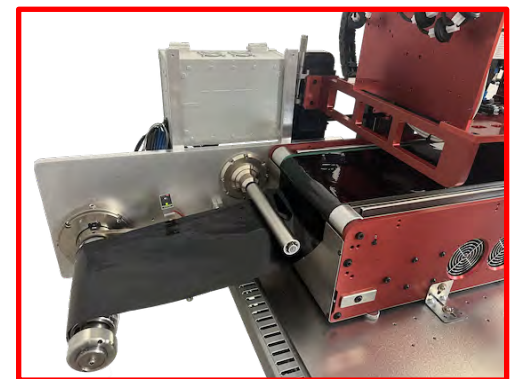
JetXpert	Drop visualization and analysis of drop volume, velocity, and trajectory High quality optics for sharp images of drops, satellites, and misting Upgradeable with additional cameras and capabilities to automate common tests
Printing Stage	High speed, high resolution belt Can be configured with Unwinder, Rewinder, or Complete Roll-to-Roll Vacuum-Secured Sample
Printhead Mount	Custom mounts for every printhead on the market Mounting for one or more printheads in any configuration
Drive Electronics	Compatible with drive electronics from all manufacturers Can be configured and supported by ImageXpert or with your equipment
Ink Delivery System	Work with gravity-fed, recirculating, heating, degassing, or multiple fluids Can be configured and supported by ImageXpert or with your own equipment
Print Quality Analysis	Allows visualization and quantitative analysis of print quality using fully integrated software Highly customizable hardware and analysis for your application Measurement capabilities include dot, line, edge, text, bleed, etc.
Print Process	Camera-based substrate alignment UV, LED, NIR, or other curing station Plasma, corona, or another pretreatment



Belt



Unwinder



Rewinder

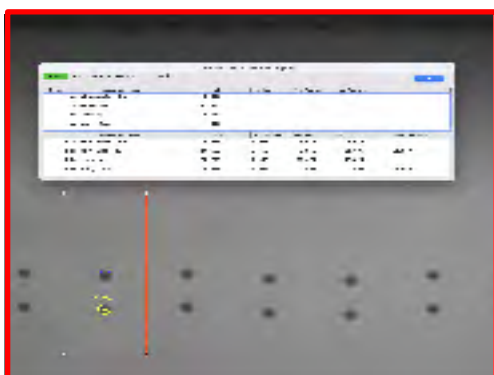


Print Station Specs

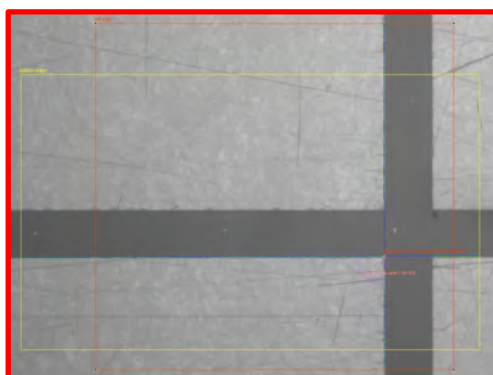
Max Substrate Width	210 mm *
Substrate Hold	Vacuum Clamping
Print Speed	Up to 2 m/s
Printheads	Universal Compatibility
Drive Electronics	Universal Compatibility
Number of Colors	1 - 4 *
Machine Vision	Dropwatching, Substrate Alignment, Print Quality Analysis
Ink Types	Universal Compatibility
Ink Supply	Gravity, Recirculation, Heated, Degas
Footprint	1.2 x 1.2 x 1.6 m
Weight	450 kg
Ink Curing / Drying Systems	Universal Compatibility
Enclosure	UV Blocking, Mist Extraction, Safety Doors

*Customizable

Drop Analysis



Substrate Alignment



Print Quality Analysis

