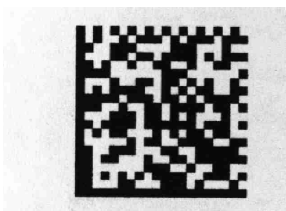
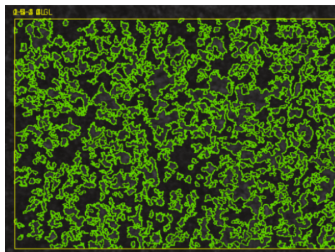
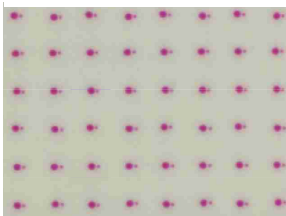
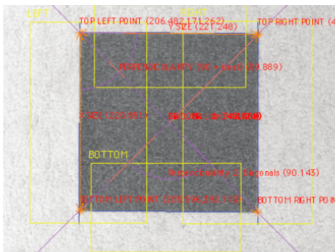
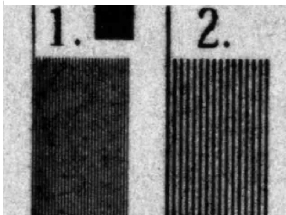
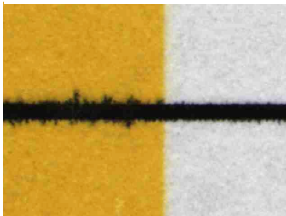
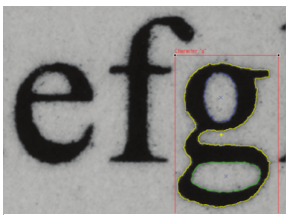
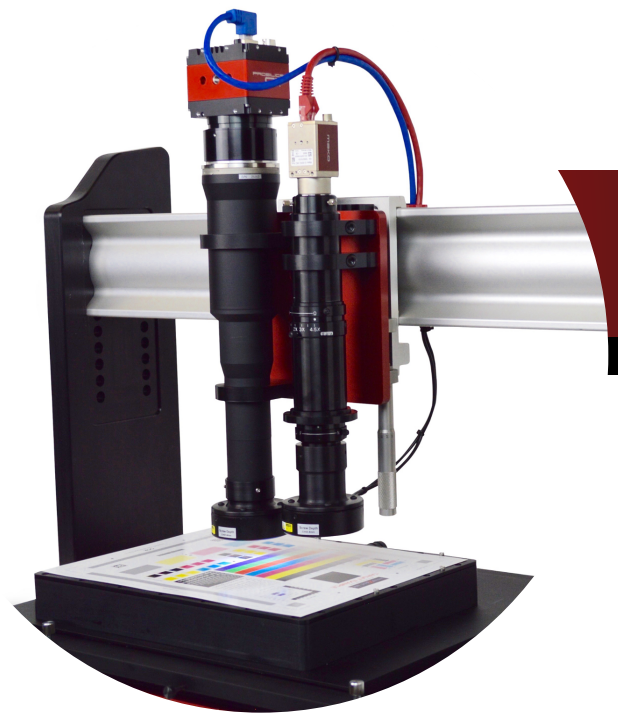


imageXpert[®] Manual Motion

ImageXpert Stand-Alone Audit Station

The ImageXpert Manual Motion Workstation enables rapid characterization of print quality and almost unlimited customizable measurement of key feature attributes.



Features and Benefits

- Overhead camera for high resolution image capture
- Manual motion stage, allowing easy and smooth sample movement
- ImageXpert software, including detailed characterization of text, dot, and line quality, inter-color bleed, resolution, solid areas/halftones, color registration, OCR, and many other easily customizable measurements
- A variety of available light sources
- Get objective results, using your own test target
- Workstation

Visit www.imagexpert.com for more information

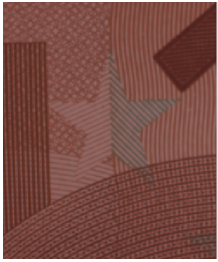
imageXpert[®]

www.imagexpert.com

Email: info@imagexpert.com

Tel: 603-598-2500

Fax: 603-598-2687



ImageXpert Manual Motion systems can be configured to measure a variety of print quality attributes, including intercolor bleed, mottle, text, line, and dot quality, dot positioning, overspray, missing, faint, misdirected jets, and more. They are also used for part inspection and other QA applications, and in authentication, detection, and analysis of forgeries and counterfeits.



Economic solution offering image capture, target control, and a full image analysis software suite, in one test fixture.

Benefits

Manual Motion is a calibrated, high precision optical measurement system for a variety of applications, and includes a full suite of image analysis and enhancement algorithms.

As a stand-alone system or integrated on-line production, this camera based system can be customized to fit your application, including parts inspection, print quality, or security printing and authentication.

Print Quality

Print quality is measured objectively, quantifiably, against tolerances (pass/fail), and all results are recorded.

Analysis tools include dynamic locating, correlation, line quality, color characterization, grayscale, color registration, dimensional accuracy, text quality, resolution, coverage, sharpness, halftone quality, dot quality, skew, uniformity, streaks and bands, FFT, dot placement, mottle and graininess, OCR/Barcode, and more.

Forensic

Includes tools to measure wear, plate registration, pattern matching, text and signature analysis/authentication, and a variety of other non-destructive testing.

Parts and Substrate Analysis

Easily create customized measurements to quantify key part attributes, including dimensional accuracy and uniformity, both for development and quality control.

System Components	
Workstation and Software	Workstation pre-configured and loaded with ImageXpert software for custom image analysis. Microsoft Office is included
Camera	GIGE interface, color camera available, C-mount for multiple lens options, magnification and resolution dependent on application requirements
Light Source	Ring light is standard, but custom lighting options are available
Accessories	Optical Calibration Target, Documentation
Options	Options include pre-built custom applications, color camera, alternative lighting sources, multiple cameras, larger motion table, motorized table, X-Rite, laser for 3D mapping, etc.