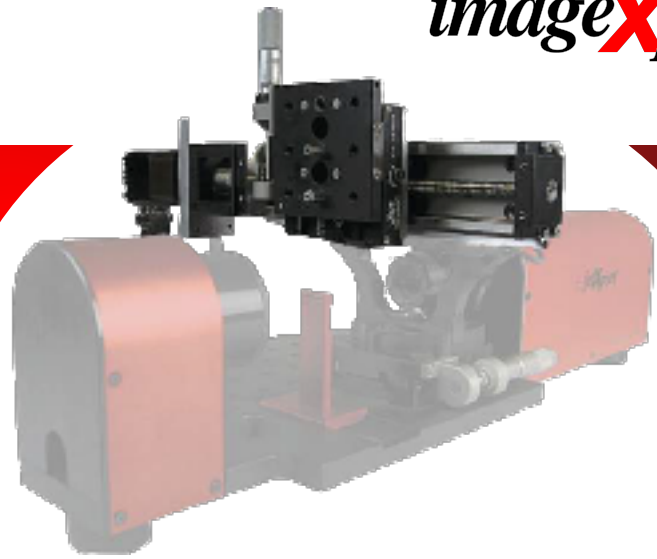


Fully integrated system to automatically measure nozzles across the printhead



## Features and Benefits

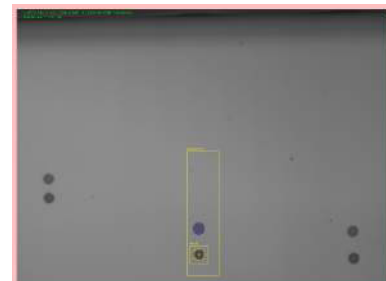
The JetXpert Motion Add-On adds a software controlled motorized stage for moving the printhead side to side. Using a simple GUI, users of JetXpert with Motion can scan across the head, making measurements and recording data from each nozzle

### Automation

- Automatically run standard analysis tools or user customized analysis tools on each nozzle across the head
- Data is automatizally saved in excel readable format
- Distance between nozzles is preprogrammed for each printhead

### Missing Jets

- Automated sustainability testing saves engineering time and material over traditional methods
- User defines both the time between scans and the number of scans
- Easy-to-read data report includes list of missing jets at the same time



### User Controlled Motion

- Included joystick allows the user to directly control printhead position
- Single Move controls make it easy to step between nozzles or move directly to any individual nozzle
- Just type a number and go!