

Industrial Scanner

**Fully integrated scanner systems for
low-cost image-based analysis**



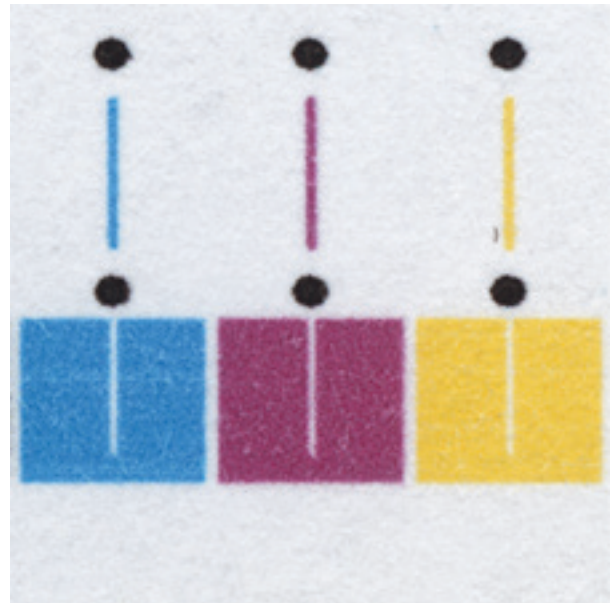
Features and Benefits

Combine the power of ImageXpert software with the convenience and economy of an A3 sized scanner-based inspection system to deliver objective and repeatable image quality, substrate, or surface analysis

- 2400 optical dpi allows for flexible image capture at a wide range of resolutions from detailed analysis (line and dot quality) to large area analysis (mottle, banding, and solid area quality)
- The A3 size scanner has both transmission and reflection modes for use with a variety of materials and substrates
- Build your own tests for your printed targets and samples using ImageXpert software

Measurements can Include:

- Line Width
- Edge Raggedness
- Dot Quality
- Inter-color Bleed
- Text Quality
- Mottle / Appearance
- Registration
- Dimension
- And many others!



- Fully integrated system for automated image capture and analysis
- Analysis provided by powerful and flexible ImageXpert software
- Objective, quantitative results

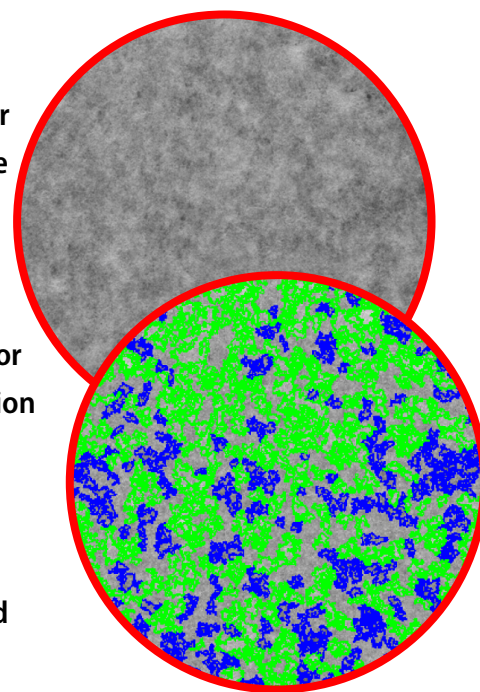


The scanner can be used to measure many image attributes that are important to inkjet printing such as jet quality, line and dot quality, dot position, and text quality.

Substrate manufacturers can use the system to analyze the appearance of substrates such as paper, film, or corrugated. Accurately assess mottle, coalescence, and other appearance characteristics with results that correlated with AppearanceXpert.

The ability to use different scanning resolutions, and select between color or grey scans, allows the user to customize measurement methods to best fit their needs. Interactive tools allow for quick feedback on image content during development, and automation allows for efficient image analysis and the collection of quantitative performance data in production.

The system can also be configured with measurement tolerances for automated quality assurance in a production environment.



	System Configuration
Model Number	12000XL
Scanner	2400 x 2400 dpi optical resolution; flatbed scanner; 8 bits per color channel, RGB
Sample Size	Up to 12.2" x 17.2" maximum (310 x 437 mm); USA Tabloid, A3
Interface	USB
Modes	Reflection and (optional) transmission
Analytical Software	ImageXpert image analysis software
Software Interface	Graphical user interface, menu driven, point and click
Save Images	Automatic

Visit www.imagexpert.com for more information

imageXpert®

www.imageexpert.com

Email: info@imagexpert.com

Tel: 603-598-2500

Fax: 603-598-2687