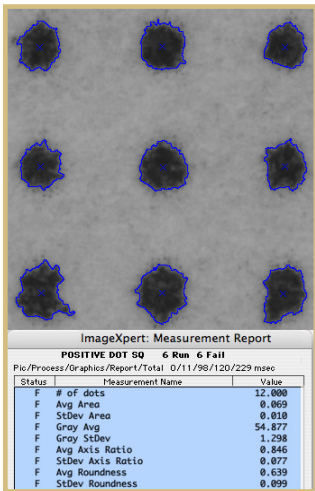


ImageXpert Full-Motion System

Fully integrated motion systems for automated image-based analysis.



ImageXpert offers machine vision-based measurement systems for 2-D and 3-D inspection. ImageXpert offers modular measurement systems designed to suit the requirements of your image quality or inspection application.

FEATURES AND BENEFITS

Full-motion, automated image analysis system with multiple cameras and laser triangulation for height profiling and 3-D inspection

Measurements can include:

- Line width
- Edge raggedness
- Dot quality
- Registration
- Dimension
- And many others...

- A high level of automation and can support high throughput inspection
- Uses one or more cameras for image capture and analysis of many features from edge sharpness to dimension
- Add a laser module for non-contact height measurement and 3-D profiling of printing on opaque, translucent and transparent materials

ImageXpert benefits include:

- Fully integrated system
- Automated, objective, quantitative analysis
- Optimize cameras and lighting for your application
- Custom configurations are available



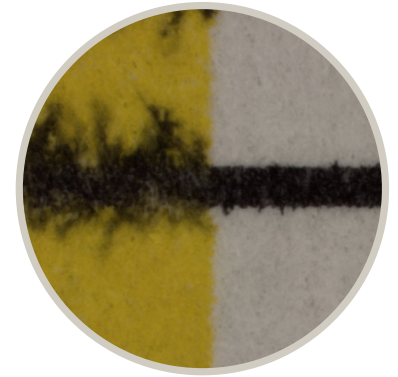
Built to endure the rigors of a high throughput production environment while providing the flexibility needed in R&D, ImageXpert systems offer a variety of hardware options to address the needs of different applications.

The full motion system uses one or more cameras for image capture and analysis of many features from line quality and dot quality to dimension.

A laser module can be added to the motion system for non-contact height

measurement and 3-D profiling of printing on opaque, translucent and transparent materials. Other equipment such as an X-Rite spectrodensitometer or a gloss meter can be added for expanded measurement capabilities.

The powerful image analysis software at the core of all ImageXpert systems was designed for both interactive and automated use.



System Configuration

Motion travel	12"x 12", 18" x 18", 24" x 24" (other stage configurations available); optional +/- 5 degree rotary stage for skew correction
Encoder resolution	1 micron
Repeatability	+/- 1 micron
Accuracy	+/- 18 microns per 25.4mm for 18"x 18" stage
Positioning	2-speed, 2-axis joystick and on-screen positioning
2-D cameras	Black and white and 3CCD color firewire cameras. Other formats available.
1-D cameras (linescan)	1K-8K elements, black and white and color
Optical resolution	Up to 0.5 microns per pixel (dependent on needs of application)
Illumination options	LED ring light, UV, fiber optic, backlight (dependent on needs of application)
Laser module for 3-D analysis	0.05 micron height resolution, 30 micron spot size; can be used to measure transparent, translucent and opaque materials
Analytical software	ImageXpert image analysis software
Software interface	Graphical user interface, menu driven, point and click
Ability to automatically save images	Yes
E-stop	Standard
Support for other instrumentation	Yes
Enclosure	Available
Dimensions and weight (W x D x H)	4' x 4' x 5', 600lbs

imageXpert

www.imagexpert.com

Email: info@imagexpert.com

Tel: 603-598-2500

Fax: 603-598-2687

For automated inspection